

EZ Touch PLC™ 10" TFT Color Slim Bezel Panels

10" Color EZTouchPLC - Slim Bezel (10.4" TFT)

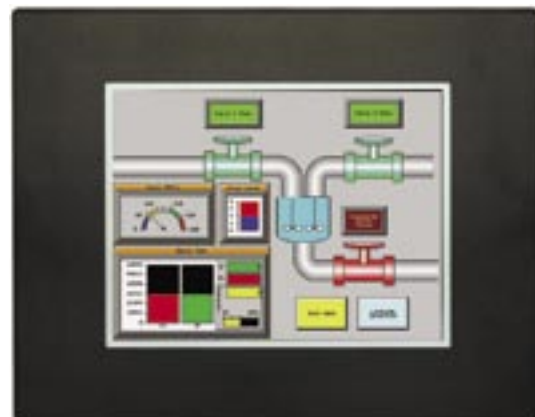
The 10" color EZTouchPLC slim bezel panels have an 10.4" diagonal touch screen, with a 640x480 pixel resolution and feature a TFT LCD (liquid crystal display) and is available with 48 I/O (max) PLC base. I/O modules are not included with EZTouchPLC and can be purchased separately. Please refer to EZ I/O section (9) which lists all the available modules along with part number and pricing. All models feature a low-profile slim bezel design that provides a small footprint on your enclosure.

Features

- 10.4" diagonal color TFT LCD, 128 colors
- NEMA 4, 4X (indoor) or NEMA 1, FDA compliant material
- 640x480 pixel resolution
- 512K RAM expandable to 1.5MB
- 512K, 1MB or 2MB option flash card for memory backup
- 25,000 hour expected bulb half-life
- 192 touch cells (16x12)
- 1/4" gasket and four DIN mounting clips for NEMA 1
- 1/4" O-ring gasket and eight mounting studs for NEMA 4, 4X (indoor)
- 3.856" (97.95mm) installed depth

64 I/O EZPLC BASE

- Total Program/Data Memory 64KB
- 3ms Scantime for 1K Instruction
- RS232 & RS422/485 Ports
- ASCII In/Out
- Built-in Calendar/Clock



Model Number	Interface
EZP-T10C-FS-PLC	10" TFT Color, 64 I/O EZPLC base, DC Power
EZP-T10C-FS-PLC-E	10" TFT Color, 64 I/O EZPLC base w/Ethernet, DC Power
EZP-T10C-FS-PLC-D	10" TFT Color, 64 I/O EZPLC base w/DeviceNet, DC Power
EZP-T10C-FS-PLC-P	10" TFT Color, 64 I/O EZPLC base w/Profibus, DC Power

